

## From airport BER to Frankfurt (Oder) by public transport

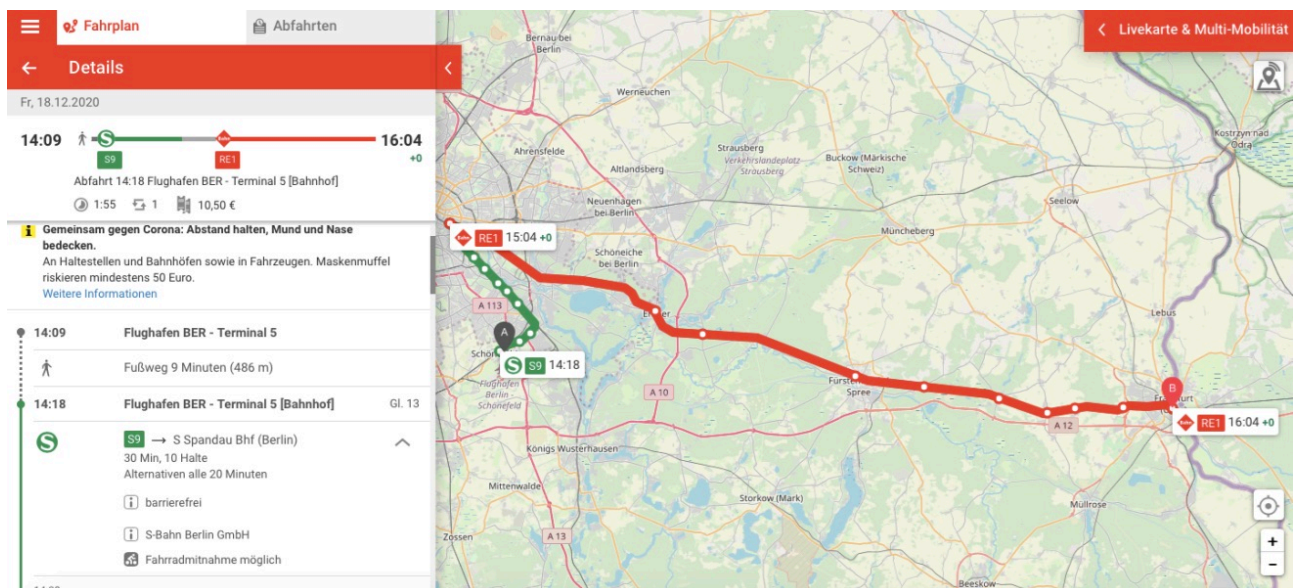
The airport BER is well connected to public transport, which will bring you to Frankfurt (Oder). The Airport Express (FEX) and regional trains (RE7, RB14) travel between Berlin central station and “Flughafen BER - Terminal 1-2” station several times per hour. The S9 and S45 S-Bahn trains travel every 20 minutes, serving the “Terminal 1-2” and “Terminal 5” stations. Buses are also available.



©<https://ber.berlin-airport.de>

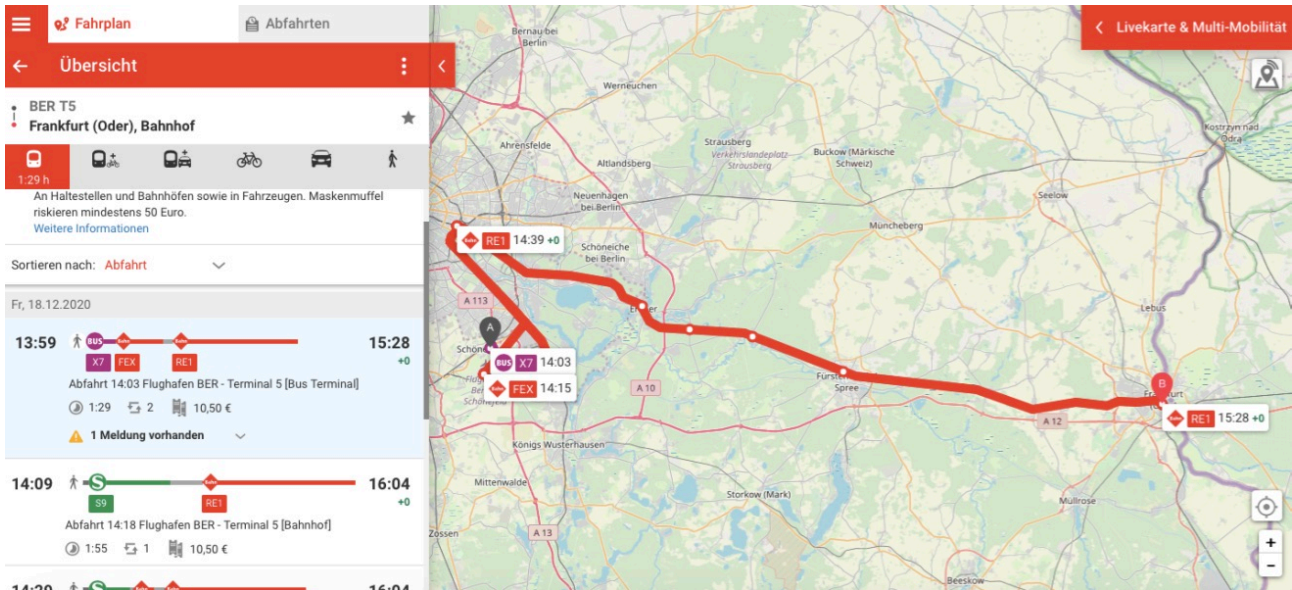
The railway station at the airport is directly below T1. The Airport Express and regional trains taken together travel to Berlin Hauptbahnhof four times every hour. The journey takes 30 minutes. In addition, the S9 and S45 S-Bahn train lines connect BER to the city centre, travelling every 20 minutes. S9 and S45 S-Bahn train lines also stop at the “Terminal 5” station.

To get to Frankfurt (Oder) train station, you will need to take a regional train RE 1. This can be done by taking a S9 train line from the airport to Berlin Ostbahnhof (the duration of journey is 30 minutes). At Berlin Ostbahnhof station, you need to switch trains to regional train RE 1, which will bring you to Frankfurt (Oder).



©VBB

You can take as well the Airport Express (FEX) to the Berlin Ostkreuz station (the journey lasts 17 minutes) and switch to the regional train RE 1 to Frankfurt (Oder) at the Ostkreuz station.



©VBB

It takes 1.5 hours to get from the airport to Frankfurt (Oder). However, we highly recommend you to check the up-to-date information about connections on the <https://www.vbb.de> or in the VBB App.